



### Shenzhen YiLiNK R&D Center

Block A, Central Times, Longgang District, Shenzhen City, China, 518115

### Dongguan YiLiNK Factory

Huazhaoxin Industrial Park, Building D, Dongguan, P.R.China

### Ganzhou YiLiNK Factory

Industrial 2nd Road, YiLiNK Industrial Park, Ganzhou, Jiangxi, P.R.China

### Contact Us



[www.Yilink-energy.com](http://www.Yilink-energy.com)



[info@Yilink-energy.com](mailto:info@Yilink-energy.com)



+86 755 28684503

### Contact Us



### Find more



# YiLiNK

V2.0

## Enjoy peace of mind with YiLiNK lithium batteries

## Are You Looking for A Trusted Advisor or Just A Battery Vendor?



We at YiLiNK work with clients jointly in finding best-value investment solutions in the field of solar energy storage by providing an efficient, practical, friendly and no-nonsense service.

YiLiNK manufactures high quality lithium batteries of time-tested reliability thanks to our wealth of technological and industry application experience. All clients of YiLiNK deserve total information transparency and best-of-class pre- and post-sale services, which we believe are the bedrock of honest and sustainable transactions and repeat business.

## We Are Engineer, Information Sharer, Service Provider, Your Partner And Team Member.

### As You Can See,

### Our Role Is Well Beyond Selling Machines Alone.



All YiLiNK lithium batteries are produced in-house by a professional and dedicated team of engineers and operatives with many years of service and experience (6-10 years). We are proud that each of our members is rigorous, professional, vibrant, hard-working and willing to provide ever customer with help within their ability. Our dedicated team has pioneered lithium battery industry, never stopping at anything less than success.



## Our Story

YiLiNK opened its door in the year of 2004 as a lithium battery solution provider in China, after a few years of deep involvement in the lithium battery industry, we built our battery pack manufacturing facility in 2013 and began to manufacture lithium batteries in house. In 2016, we established our second R&D and manufacturing facility.

We are a vibrant, continuously innovating and growing enterprise, providing hundreds of enterprises with thousands of lithium battery solutions. We have been awarded the honour of being allowed to join the rank of “National High-Tech Enterprise”. Our profound appreciation of the complete supply-value chain covering PCB, BMS, lithium battery pack and energy storage integrating lithium battery forms the bedrock of our ability to provide our clients with meaningful and cost-effective services.



### We Value You

Customer-focused and value-oriented are not empty marketing slogans. We know that business successes are not about us, it is about you, your needs, your profitability and your market. Our mutual successes are not only due to the high-quality battery, but also our interactive attitudes and the way we treat each other.



### We Value Commitment and Integrity

These are the core qualities on which we depend to survive and develop in the long term. They guide each of us in our daily work to ensure that our products truly benefit our clients.



### We Value Continuously Studying

We know that meaningful growth can only come from experience. The constant improvement in the way we think and act brings about new knowledge and skills, allowing us to optimize processes and operating system.



### We Value Cooperation

As a global company, we thrive on collaboration with our employees, suppliers, customers, communities and ecology. We believe that global specialization of labor and structural cooperation with each other will help forge a greener future.



### We Value Sharing

We believe that the process of sharing is the process of learning and developing, the latter enables the creation of a structural value chain from which our employees, suppliers, customers and communities can be benefited and gain continuous growth and value.

## What We Can Assist with

YiLiNK is available to show you our product range and guide you in the choice of the products that best fits your needs:



Lithium solar storage battery for commercial, residential and industrial use



Custom lithium battery for Digital Product, Consumer Product, Smart Product, etc



Motive lithium battery for AGV, RV, MARINE, EV, GOLF-CART, E-SCOOTER, etc



ODM / OEM Series

## Certification We Comply and are Awarded

- ISO9001 / ISO14001
- IEC / CE / CB / UL / UN38.3 / PSE / KC / FCC / ROHS / CQC / SGS



# Let Lithium Batteries Drive and Illuminate Every Corner of the World

Wherever You Are Located,  
We Are Able And Willing To Provide You With Lithium Battery Solutions



## 06

### How You Can Benefit From YiLiNK Solar Battery

#### Powerwall Battery

10 iPower Mini



12 iPower H Series



14 iPower Pro



16 iPower Plus



#### Rack Battery

18 iPower R series 24V & 51.2VDC



20 iPower S series 24V & 51.2VDC



22 iPower Pro



#### High Voltage Battery

24 PowerUp Series 192V-240VDC



#### Super-high Voltage Battery

26 384V~1500VDC



30 Projects



## Track Records Of Reliability

**530 Mwh**

530 MWh – Over 530 MWh battery system global deployment

**0%**

0% complaint rate for battery cells

**0.5%**

< 0.5% complaint rate for BMS

**24 HOUR**

5 to 10 years warranty with 24 hours response after-sales services

**IC BMS**

High Precision Panasonic IC, Intelligent BMS

**100%**

100% DoD supportive, 98% efficiency

**A**

Guaranteed Brand-New Premium Quality Grade A Battery Cells

**6,000 cycles**

More than 6,000 cycles

**10-15 years**

10~15 years life span

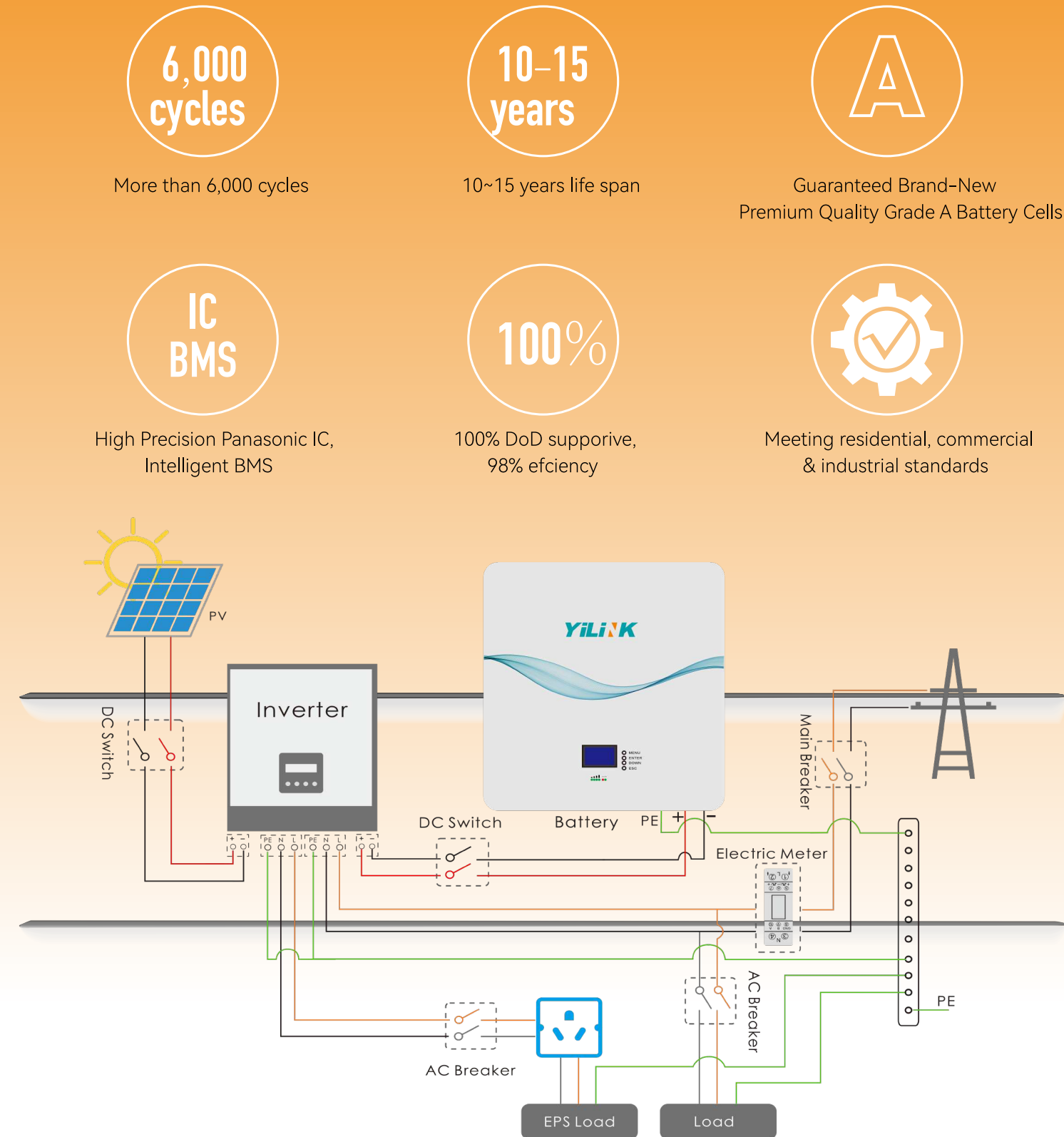
**24 HOUR**

Battery tested and approved by SGS, TUV, UL third party labor

**24 HOUR**

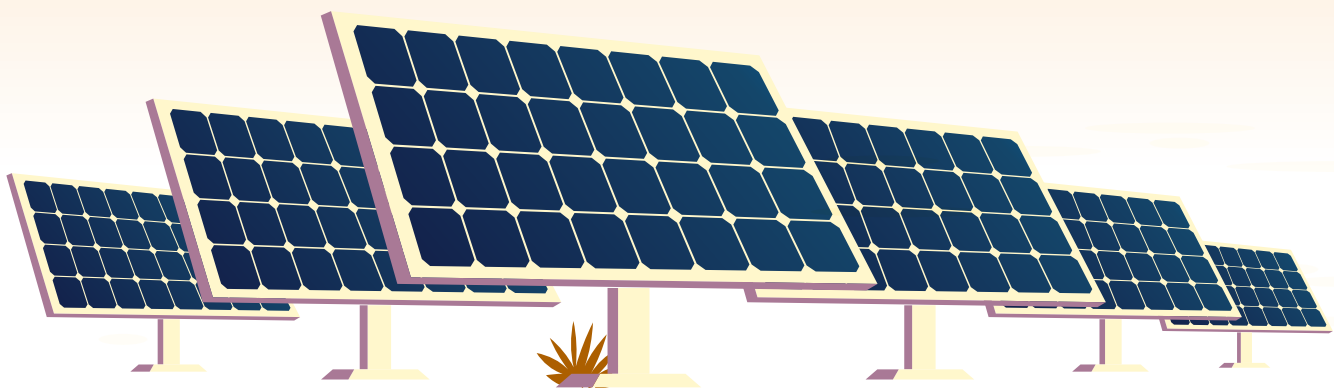
Comply with IEC62619, EN/IEC61000-3, EN/IEC-61000-6, UL1973, RoHS, CE, MSDS, UN38.3

## Premium High Configurations



## User Friendly

- Parallel capability up to 15PCS units, meeting diferent site energy requirements
- Great inverter communication compatibility:  
Deye, Growatt, Sol-Ark, SunSynk, Victron, Voltronic, Goodwe, Luxpower, Sofar, SMA, Schneider, Solis, TBB, etc
- PC Monitoring and Wifi remote monitoring & commissioning for optional
- Wall mounted, floor standing and rack mounted installations supportive
- International CLASS 9 dangerous goods packing certifications
- High energy density with light-weight
- Full matched accessories supportive





# Residential & Commercial Small-scale Solar Energy Storage System



# Powerwall Battery

## iPower Mini



## Specification

Model	YL-W5150	YL-W51100	YL-W51150	YL-W51200
<b>Electrical</b>				
Battery Type	LiFePO4			
Nominal Voltage	51.2V			
Nominal Capacity	50Ah	100Ah	150Ah	200Ah
Nominal Energy	2.56kWh	5.12kWh	7.68kWh	10.24kWh
Max. Output Power	2.56kW	5.12kW	7.68kW	10.24kW
Recommend Charge Current	10A	20A	30A	40A
Max. Continuous Charge Current	50A	100A	100A	100A
Max. Continuous Discharge Current	50A	100A	100A	100A
<b>Mechanical</b>				
Net Weight	28kg	52kg	68kg	87kg
Dimension (W*D*H)	410*450*144mm	480*520*167mm	490*520*210mm	520*520*230mm
Installation Way	Indoor Wall Mount			
IP Rating	IP31			
<b>Operational &amp; Configurations</b>				
Battery Level	Brand New Premium Grade A Battery Cells			
BMS Level	High Precision Panasonic IC, Intelligent BMS			
Alarm and Protection	Multiple Protections From Battery Cells to Battery Pack			
Working Voltage	40.00~58.40V			
Operating Temperature Charging	0~55°C			
Operating Temperature Discharging	-20~60°C			
Monthly Self Discharge	≤2% @25°C			
Efficiency Of Charge & Discharge	≥99.5% @0.2C			
Cycle Life	More Than 6,000 Times*			
Communication	CAN/RS485/RS232/Dry Contact			
Compatible Inverers	Deye, Growatt, Sol-Ark, SunSynk, Victron, Voltronic, Goodwe, Luxpower, Sofar, SMA, Schneider, Solis, TBB, INVT, etc			
Parallel Capability	Support Up to 15PCS in Parallel			
Monitoring & Commissioning	PC Terminal or Wifi Module Remote Monitoring (for Optional)			
Warranty	5 to 10 Years			
Cerifications & Safety Standards	CE, IEC62619, IEC/EN61000-3, IEC/EN61000-6, ROHS, UL1973, UN38.3, MSDS			

\*: @0.2C, 80% DoD, 25°C



# Powerwall Battery

## iPower H Series



## Specification

Model	YL-H5150	YL-H51100	YL-H51150	YL-H51200
<b>Electrical</b>				
Battery Type	LiFePO4			
Nominal Voltage	51.2V			
Nominal Capacity	50Ah	100Ah	150Ah	200Ah
Nominal Energy	2.56kWh	5.12kWh	7.68kWh	10.24kWh
Max. Output Power	2.56kW	5.12kW	5.12kW	5.12kW
Recommend Charge Current	10A	20A	30A	40A
Max. Continuous Charge Current	50A	100A	100A	100A
Max. Continuous Discharge Current	50A	100A	100A	100A
<b>Mechanical</b>				
Net Weight	29kg	53kg	69kg	88kg
Dimension (W*D*H)	410*450*144mm	480*520*167mm	490*520*210mm	520*520*230mm
Installation Way	Indoor Wall Mount			
IP Rating	IP31			
<b>Operational &amp; Configurations</b>				
Battery Level	Brand New Premium Grade A Battery Cells			
BMS Level	High Precision Panasonic IC, Intelligent BMS			
Alarm and Protection	Multiple Protections From Battery Cells to Battery Pack			
Working Voltage	40.00~58.40V			
Operating Temperature Charging	0~55°C			
Operating Temperature Discharging	-20~60°C			
Monthly Self Discharge	≤2% @25°C			
Efficiency Of Charge & Discharge	≥99.5% @0.2C			
Cycle Life	More Than 6,000 Times*			
Communication	CAN/RS485/RS232/Dry Contact			
Compatible Inverers	Deye, Growatt, Sol-Ark, SunSynk, Victron, Voltronic, Goodwe, Luxpower, Sofar, SMA, Schneider, Solis, TBB, INVT, etc			
Parallel Capability	Support Up to 15PCS in Parallel			
Monitoring & Commissioning	PC Terminal or Wifi Module Remote Monitoring (for Optional)			
Warranty	5 to 10 Years			
Cerifications & Safety Standards	CE, IEC62619, IEC/EN61000-3, IEC/EN61000-6, ROHS, UL1973, UN38.3, MSDS			

\*: @0.2C, 80% DoD, 25°C



# Powerwall Battery

**iPower Pro**



## Specification

Model	YL-P51100	YL-P51150	YL-P51200
<b>Electrical</b>			
Battery Type	LiFePO4		
Nominal Voltage	51.2V		
Nominal Capacity	100Ah	150Ah	200Ah
Nominal Energy	5.12kWh	7.68kWh	10.24kWh
Max. Output Power	5.12kW	5.12kW	5.12kW
Recommend Charge Current	20A	30A	40A
Max. Continuous Charge Current	100A	100A	100A
Max. Continuous Discharge Current	100A	100A	100A
<b>Mechanical</b>			
Net Weight	55kg	75kg	92kg
Dimension (W*D*H)	520*760*170mm	520*760*210mm	520*800*230mm
Installation Way	Indoor/Outdoor Wall Mount		
IP Rating	IP65		
<b>Operational &amp; Configurations</b>			
Battery Level	Brand New Premium Grade A Battery Cells		
BMS Level	High Precision Panasonic IC, Intelligent BMS		
Alarm and Protection	Multiple Protections From Battery Cells to Battery Pack		
Working Voltage	40.00~58.40V		
Operating Temperature Charging	0~55°C		
Operating Temperature Discharging	-20~60°C		
Monthly Self Discharge	≤2% @25°C		
Efficiency Of Charge & Discharge	≥99.5% @0.2C		
Cycle Life	More Than 6,000 Times*		
Communication	CAN/RS485/RS232/Dry Contact		
Compatible Inverers	Deye, Growatt, Sol-Ark, SunSynk, Victron, Voltronic, Goodwe, Luxpower, Sofar, SMA, Schneider, Solis, TBB, etc		
Parallel Capability	Support Up to 15PCS in Parallel		
Monitoring & Commissioning	PC Terminal or Wifi Module Remote Monitoring (for Optional)		
Warranty	5 to 10 Years		
Cerifications & Safety Standards	CE, IEC62619, IEC/EN61000-3, IEC/EN61000-6, ROHS, UL1973, UN38.3, MSDS		

\*: @0.2C, 80% DoD, 25°C

# Powerwall Battery

## iPower Plus



## Specification

Model	YL-WS51300-100	YL-WS51300-150	YL-WS51300-200
<b>Electrical</b>			
Battery Type	LiFePO4		
Nominal Voltage	51.2V		
Nominal Capacity	300Ah		
Nominal Energy	15.36kWh		
Max. Output Power	5.12kW	7.68kW	10.24kW
Recommend Charge Current	60A		
Max. Continuous Charge Current	100A	150A	200A
Max. Continuous Discharge Current	100A	150A	200A
<b>Mechanical</b>			
Net Weight	136kg		
Dimension (W*D*H)	580*900*230mm		
Installation Way	Indoor Wall Mount Or Floor Installation		
IP Rating	IP31		
<b>Operational &amp; Configurations</b>			
Battery Level	Brand New Premium Grade A Battery Cells		
BMS Level	High Precision Panasonic IC, Intelligent BMS		
Alarm and Protection	Multiple Protections From Battery Cells to Battery Pack		
Working Voltage	40.00~58.40V		
Operating Temperature Charging	0~55°C		
Operating Temperature Discharging	-20~60°C		
Monthly Self Discharge	≤2% @25°C		
Efficiency Of Charge & Discharge	≥99.5% @0.2C		
Cycle Life	More Than 6,000 Times*		
Communication	CAN/RS485/RS232/Dry Contact		
Compatible Inverers	Deye, Growatt, Sol-Ark, SunSynk, Victron, Voltronic, Goodwe, Luxpower, Sofar, SMA, Schneider, Solis, TBB, INVT, etc		
Parallel Capability	Support Up to 15PCS in Parallel		
Monitoring & Commissioning	PC Terminal or Wifi Module Remote Monitoring (for Optional)		
Warranty	5 to 10 Years		
Cerifications & Safety Standards	CE, IEC62619, IEC/EN61000-3, IEC/EN61000-6, ROHS, UL1973, UN38.3, MSDS		

\*: @0.2C, 80% DoD, 25°C



# Rack Battery

## iPower R series 24V & 51.2VDC



## Specification

Model	YL-R24100	YL-R24200	YL-R5150	YL-R51100	YL-R51150	YL-R51200
<b>Electrical</b>						
Battery Type	LiFePO4					
Nominal Voltage	25.6V		51.2V			
Nominal Capacity	100Ah	200Ah	50Ah	100Ah	150Ah	200Ah
Nominal Energy	2.56kWh	5.12kWh	2.56kWh	5.12kWh	7.68kWh	10.24kWh
Max. Output Power	2.56kW	2.56kW	2.56kW	5.12kW	5.12kW	5.12kW
Recommend Charge Current	20A	40A	10A	20A	30A	40A
Max. Continuous Charge Current	100A	100A	50A	100A	100A	100A
Max. Continuous Discharge Current	100A	100A	50A	100A	100A	100A
<b>Mechanical</b>						
Net Weight	25kg	48kg	26kg	47kg	63kg	78kg
Dimension (W*D*H)	442*280*177mm	442*340*230mm	442*480*132mm	442*450*177mm	442*450*195mm	442*450*230mm
Installation Way	Indoor 19 Inch Rack Mounted or Stackable					
IP Rating	IP31					
<b>Operational &amp; Configurations</b>						
Battery Level	Brand New Premium Grade A Battery Cells					
BMS Level	High Precision Panasonic IC, Intelligent BMS					
Alarm and Protection	Multiple Protections From Battery Cells to Battery Pack					
Working Voltage	20.00~29.20V		40.00~58.40V			
Operating Temperature Charging	0~55°C					
Operating Temperature Discharging	-20~60°C					
Monthly Self Discharge	≤2% @25°C					
Efficiency Of Charge & Discharge	≥99.5% @0.2C					
Cycle Life	More Than 6,000 Times*					
Communication	CAN/RS485/RS232/Dry Contact					
Compatible Inverers	Deye, Growatt, Sol-Ark, SunSynk, Victron, Voltronic, Goodwe, Luxpower, Sofar, SMA, Schneider, Solis, TBB, INVT, etc					
Parallel Capability	Support Up to 15PCS in Parallel					
Monitoring & Commissioning	PC Terminal or Wifi Module Remote Monitoring (for Optional)					
Warranty	5 to 10 Years					
Cerifications & Safety Standards	CE, IEC62619, IEC/EN61000-3, IEC/EN61000-6, ROHS, UL1973, UN38.3, MSDS					

\*: @0.2C, 80% DoD, 25°C



# Rack Battery

## iPower S series 24V & 51.2VDC



## Specification

Model	YL-S24100	YL-S24200	YL-S5150	YL-S51100	YL-S51150	YL-S51200
<b>Electrical</b>						
Battery Type	LiFePO4					
Nominal Voltage	25.6V		51.2V			
Nominal Capacity	100Ah	200Ah	50Ah	100Ah	150Ah	200Ah
Nominal Energy	2.56kWh	5.12kWh	2.56kWh	5.12kWh	7.68kWh	10.24kWh
Max. Output Power	2.56kW	2.56kW	2.56kW	5.12kW	5.12kW	5.12kW
Recommend Charge Current	20A	40A	10A	20A	30A	40A
Max. Continuous Charge Current	100A	100A	50A	100A	100A	100A
Max. Continuous Discharge Current	100A	100A	50A	100A	100A	100A
<b>Mechanical</b>						
Net Weight	25kg	48kg	26kg	47kg	63kg	78kg
Dimension (W*D*H)	442*280*177mm	442*340*230mm	442*480*132mm	442*450*177mm	442*450*195mm	442*450*230mm
Installation Way	Indoor 19 Inch Rack Mounted or Stackable					
IP Rating	IP31					
<b>Operational &amp; Configurations</b>						
Battery Level	Brand New Premium Grade A Battery Cells					
BMS Level	High Precision Panasonic IC, Intelligent BMS					
Alarm and Protection	Multiple Protections From Battery Cells to Battery Pack					
Working Voltage	20.00~29.20V		40.00~58.40V			
Operating Temperature Charging	0~55°C					
Operating Temperature Discharging	-20~60°C					
Monthly Self Discharge	≤2% @25°C					
Efficiency Of Charge & Discharge	≥99.5% @0.2C					
Cycle Life	More Than 6,000 Times*					
Communication	CAN/RS485/RS232/Dry Contact					
Compatible Inverers	Deye, Growatt, Sol-Ark, SunSynk, Victron, Voltronic, Goodwe, Luxpower, Sofar, SMA, Schneider, Solis, TBB, INVT, etc					
Parallel Capability	Support Up to 15PCS in Parallel					
Monitoring & Commissioning	PC Terminal or Wifi Module Remote Monitoring (for Optional)					
Warranty	5 to 10 Years					
Cerifications & Safety Standards	CE, IEC62619, IEC/EN61000-3, IEC/EN61000-6, ROHS, UL1973, UN38.3, MSDS					

\*: @0.2C, 80% DoD, 25°C



# Rack Battery

**iPower Pro**



## Specification

Model	YL-PS51100	YL-PS51150	YL-PS51200
<b>Electrical</b>			
Battery Type	LiFePO4		
Nominal Voltage	51.2V		
Nominal Capacity	100Ah	150Ah	200Ah
Nominal Energy	5.12kWh	7.68kWh	10.24kWh
Max. Output Power	5.12kW	5.12kW	5.12kW
Recommend Charge Current	20A	30A	40A
Max. Continuous Charge Current	100A	100A	100A
Max. Continuous Discharge Current	100A	100A	100A
<b>Mechanical</b>			
Net Weight	52kg	73kg	91kg
Dimension (W*D*H)	442*760*170mm	442*760*230mm	442*800*230mm
Installation Way	Indoor/outdoor 19 Inch Rack Mounted or Stackable		
IP Rating	IP65		
<b>Operational &amp; Configurations</b>			
Battery Level	Brand New Premium Grade A Battery Cells		
BMS Level	High Precision Panasonic IC, Intelligent BMS		
Alarm and Protection	Multiple Protections From Battery Cells to Battery Pack		
Working Voltage	40.00~58.40V		
Operating Temperature Charging	0~55°C		
Operating Temperature Discharging	-20~60°C		
Monthly Self Discharge	≤2% @25°C		
Efficiency Of Charge & Discharge	≥99.5% @0.2C		
Cycle Life	More Than 6,000 Times*		
Communication	CAN/RS485/RS232/Dry Contact		
Compatible Inverers	Deye, Growatt, Sol-Ark, SunSynk, Victron, Voltronic, Goodwe, Luxpower, Sofar, SMA, Schneider, Solis, TBB, etc		
Parallel Capability	Support Up to 15PCS in Parallel		
Monitoring & Commissioning	PC Terminal or Wifi Module Remote Monitoring (for Optional)		
Warranty	5 to 10 Years		
Cerifications & Safety Standards	CE, IEC62619, IEC/EN61000-3, IEC/EN61000-6, ROHS, UL1973, UN38.3, MSDS		

\*: @0.2C, 80% DoD, 25°C



# High Voltage Battery

## PowerUp Series



## Specification

Model	YL-HV192100-50	YL-HV240050-50
<b>Electrical</b>		
Battery Type	LiFePO4	
Nominal Voltage	192V	240V
Nominal Capacity	100Ah	50Ah
Nominal Energy	19.2kWh	12kWh
Max. Output Power	9.6kW	12kW
Recommend Charge Current	20A	10A
Max. Continuous Charge Current	50A	
Max. Continuous Discharge Current	50A	
<b>Mechanical</b>		
Net Weight	200kg	130kg
Dimension (W*D*H)	800*1155*210mm	725*895*210mm
Installation Way	Indoor Wall Mount or Floor Installation	
IP Rating	IP31	
<b>Operational &amp; Configurations</b>		
Battery Level	Brand New Premium Grade A Battery Cells	
BMS Level	High Precision Intelligent BMS	
Alarm and Protection	Multiple Protections From Battery Cells to Battery Pack	
Working Voltage	150.00~219.00V	187.50~273.75V
Operating Temperature Charging	0~55°C	
Operating Temperature Discharging	-20~60°C	
Monthly Self Discharge	≤2% @25°C	
Efficiency Of Charge & Discharge	≥99.5% @0.2C	
Cycle Life	More Than 6,000 Times*	
Communication	CAN/RS485/Dry Contact	
Compatible Inverers	Growatt,Deye,Sol-Ark,SunSynk,Goodwe,Sofar,etc	
Parallel Capability	Support Up to 7PCS in Parallel	
Monitoring & Commissioning	PC Terminal or Wifi Module Remote Monitoring (for Optional)	
Warranty	5 to 10 Years	
Cerifications & Safety Standards	CE, IEC62619, IEC/EN61000-3, IEC/EN61000-6, ROHS, UL1973, UN38.3, MSDS	

\*: @0.2C, 80% DoD, 25°C



# Power a Better World

## Industrial Energy Projects



### Introduction

YiLiNK high-voltage battery system integrates premium high-cycle lithium iron phosphate cells and battery management system with multiple levels of protection and monitoring.

The modular design and multiple levels of control allow you to meet a wide variety of backup needs for residential site, commercial sites, industrial areas and communities.

The reliable battery cells and energy management system can solve the power demand of each scenario and also bring excellent return on investment for the owner.

### Advantages

- Voltage from 192V to 1500VDC with various capacities
- Multi-level protections and monitors
- Smart monitoring and communication with Inverter, PCS and EMS
- Various installation supports: wall mounted, rack mounted and container installations
- Easy and flexible installation
- Highly reliable lithium battery cells and BMS





# Specification

Rack module-Unit 480V - 1500VDC Range

## Battery Module



Module Unit	HVM100	HVM200	HVM280
Battery Type	LiFePO4	LiFePO4	LiFePO4
Nominal Voltage (V)	51.2V	51.2V	51.2V
Nominal Capacity (Ah)	100Ah	200h	280Ah
Energy (kWh)	5.12kWh	10.24kWh	14.336kWh
Operation Cycle	More Than 6,000 Times*		
Dimension (mm)	Depends on Specific Project		

\*: @0.2C, 80% DoD, 25°C

## Battery Cluster

Typical Model	YL-C384280	YL-C480280	YL-C720280	YL-C1248280	Remark
Battery Type	LiFePO4				/
Nominal Voltage (V)	384V	480V	720V	1248V	Can be up to 1500VDC
Nominal Capacity (Ah)	280Ah				Capacity can be Battery Module
Energy (kWh)	107.52kWh	134.4kWh	201.6kWh	349.44kWh	*8PCS
Max. Output Power (kW)	107.52kW	134kW	201.6kW	349kW	Depends on final spec confirmation
Working Voltage (V)	300 ~ 438V	375 ~ 547V	562.5 ~ 821V	975 ~ 1423V	Configurable
Recommend DoD	80~90%				/
Efficiency of Charge & Discharge	≥99.5% @0.2C				/
Communication	CAN; RS485; RS232				/
Parallel Capability	8*Clusters				Max.240PCS Battery Modules
Operation Temp. (°C)	0~55°C				/
Storage Temperature	-10~45°C, @60%±25%RH				/
Working Life	10 Years				/
Standards	UL9540A; UL1973; CE; IEC62619; UN38.3				/





# Projects





